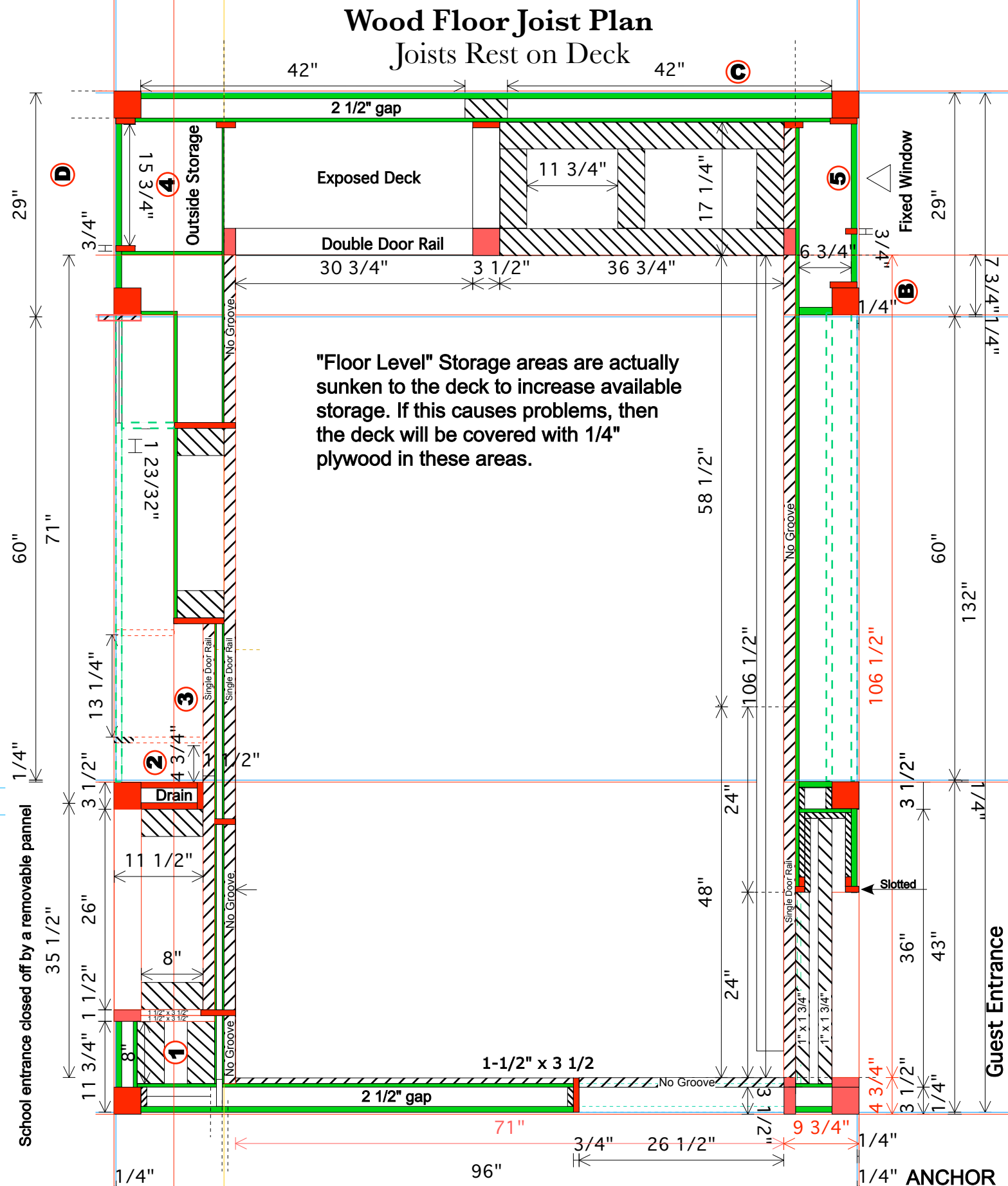


Wood Floor Joist Plan

Joists Rest on Deck



"Floor Level" Storage areas are actually sunken to the deck to increase available storage. If this causes problems, then the deck will be covered with 1/4" plywood in these areas.

Approved 2009/05/06
Checked 2009/05/18

A Apply 1/32" Cork/Rubber Setting Tape to top of two layers of 1" x 3 1/2" (1 1/2 x 4) joists. Cover with 23/32" (3/4) Plywood. Top of plywood floor shall be 2 3/4" above deck surface.

Note DO NOT NAIL PLYWOOD TO JOISTS
Plywood may be attached to joists with screws.
Note 1 1/2" Border strips are milled for single sliding doors.
Note Deck door rail is milled for double sliding doors.
Note Edging is 3/4" x 3 1/2" or 1 1/2" x 3 1/2".

1/4" ANCHOR